

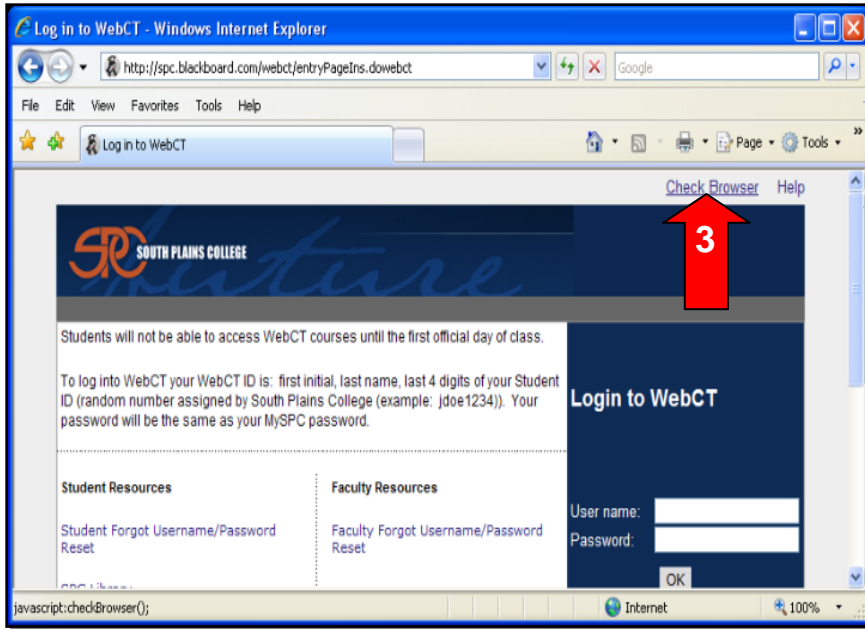
Check Browser Tutorial



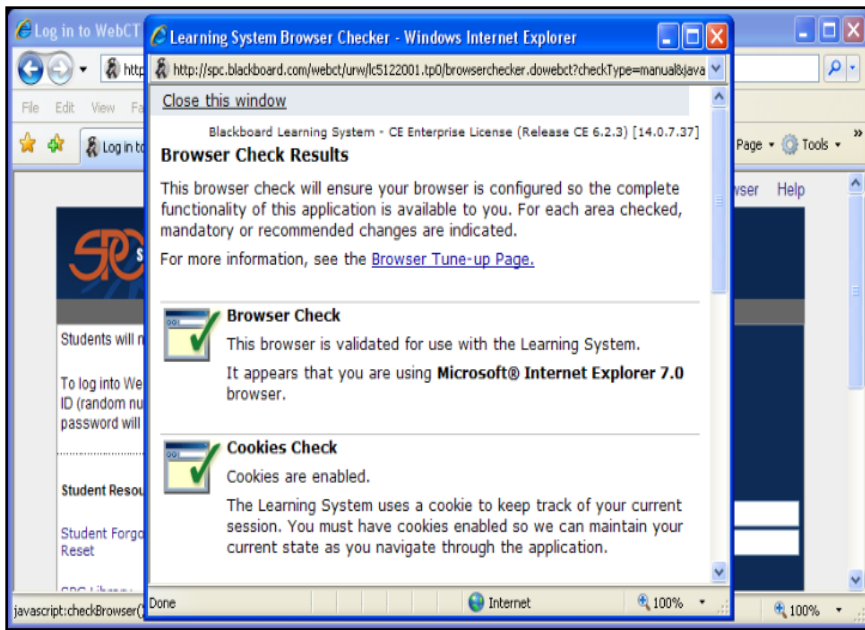
1. Go to the South Plains College homepage at www2.southplainscollege.edu.



2. Click on WebCT



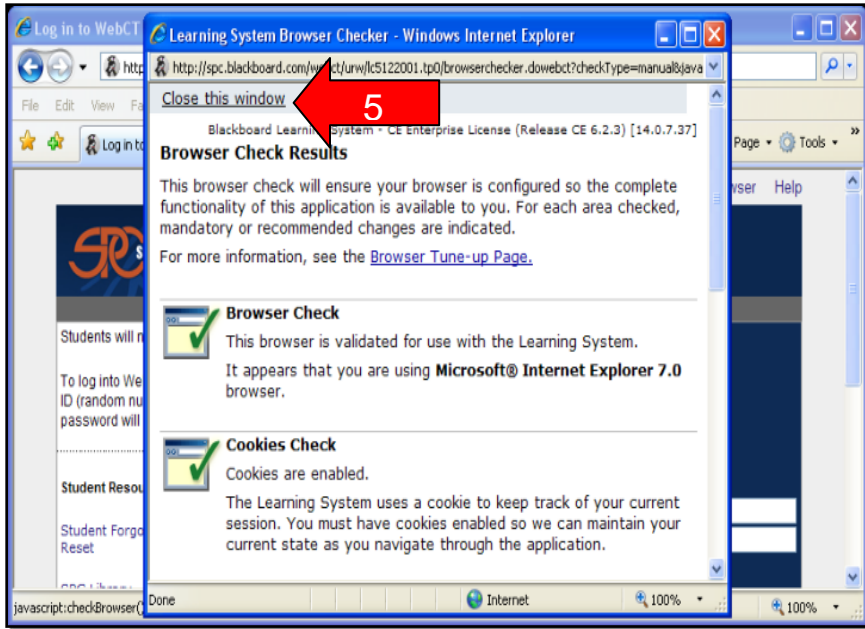
3. Select the Check Browser link.



4. A new window will appear with the results.

If an "X" appears on any part of the results, there will be a link to click on with instructions on how to resolve the issue.

The most common issues are the "Pop-up Blocker" and the "Java Check".



5. *Select close this window link.*
