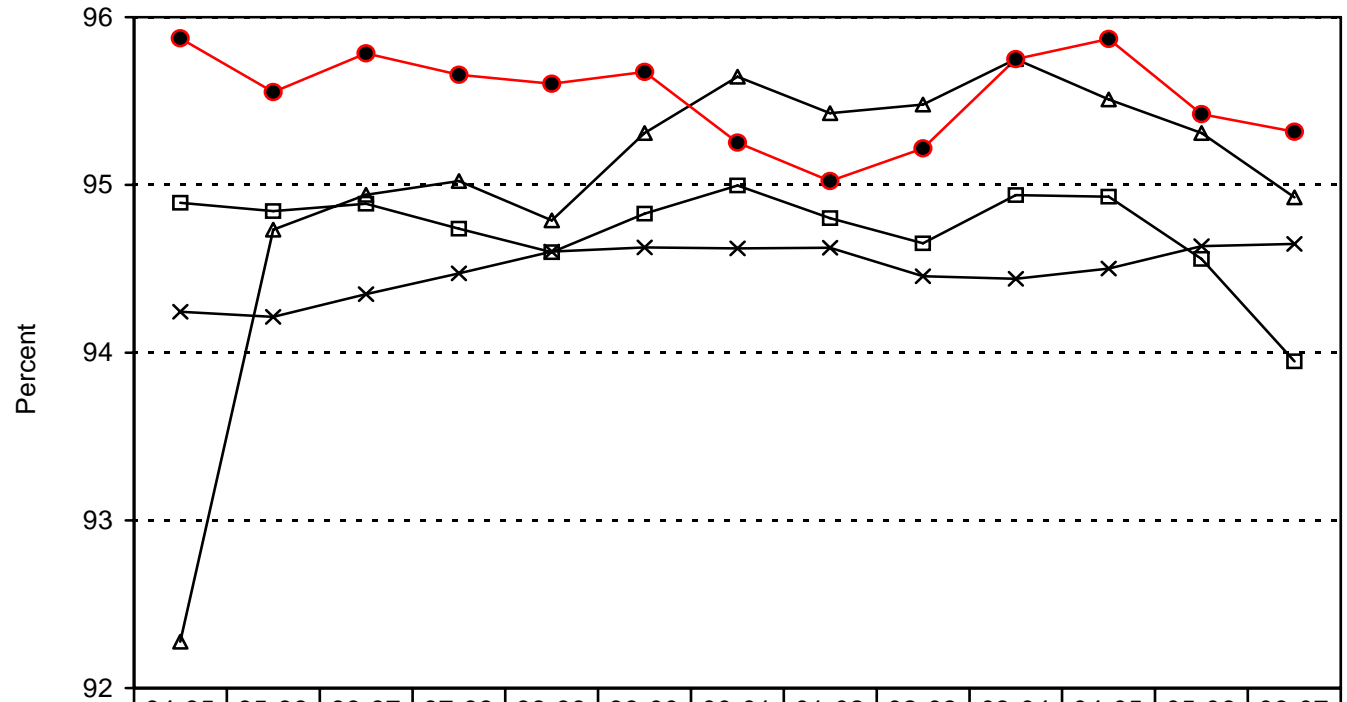


South Plains Tech Prep

Regional Annual Attendance Rates – Grades 9-12¹



	94-95	95-96	96-97	97-98	98-99	99-00	00-01	01-02	02-03	03-04	04-05	05-06	06-07
—□— All other students (0, 1)	94.895	94.845	94.888	94.740	94.598	94.828	94.996	94.802	94.651	94.940	94.930	94.557	93.947
—△— CT students not tech prep (2)	92.277	94.733	94.941	95.024	94.788	95.309	95.646	95.428	95.480	95.750	95.510	95.309	94.926
—●— Tech prep students (3)	95.874	95.553	95.784	95.658	95.604	95.674	95.252	95.024	95.218	95.750	95.870	95.422	95.318
—×— Tech prep students (3) - State of Texas	94.243	94.212	94.348	94.472	94.602	94.626	94.621	94.624	94.455	94.440	94.500	94.634	94.648

*Attendance rates are rounded.

¹ Texas Education Agency, PEIMS