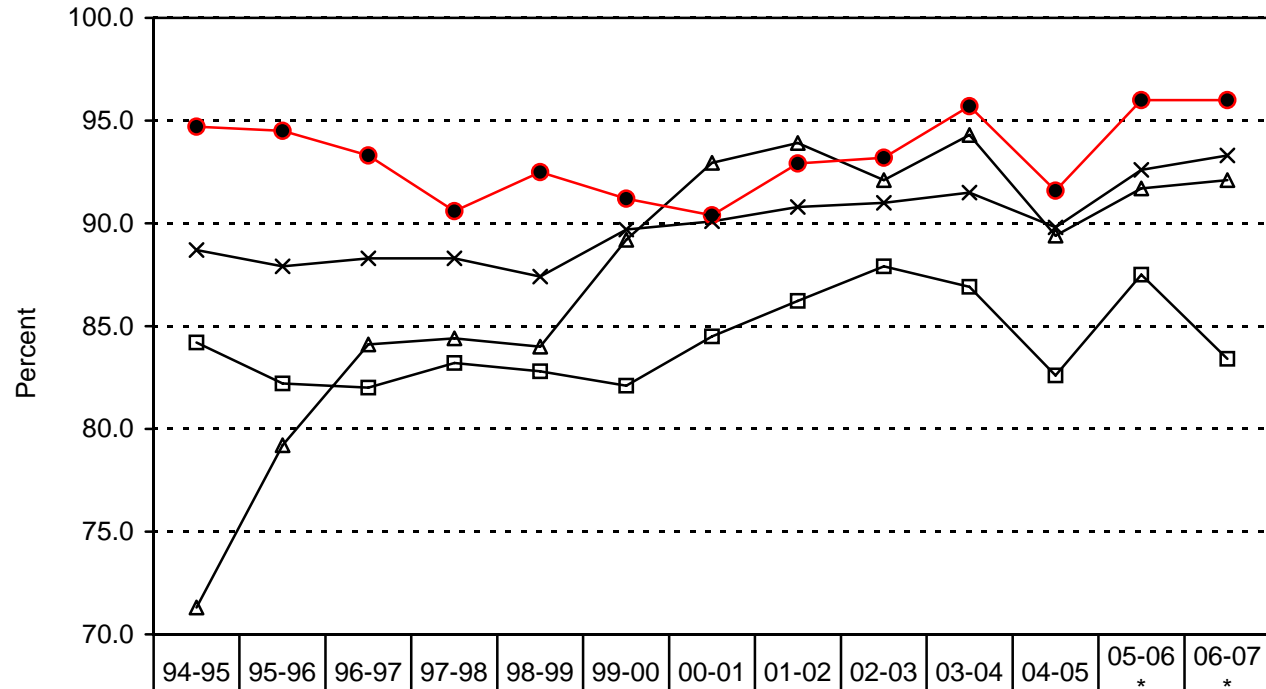


South Plains Tech Prep

Regional Graduation Rates¹



□ All other students (0, 1)	84.2	82.2	82.0	83.2	82.8	82.1	84.5	86.2	87.9	86.9	82.6	87.5	83.4
△ C/T students not tech prep (2)	71.3	79.2	84.1	84.4	84.0	89.2	93.0	93.9	92.1	94.3	89.4	91.7	92.1
● Tech prep students (3)	94.7	94.5	93.3	90.6	92.5	91.2	90.4	92.9	93.2	95.7	91.6	96.0	96.0
× Tech prep students (3) - State of Texas	88.7	87.9	88.3	88.3	87.4	89.7	90.1	90.8	91.0	91.5	89.8	92.6	93.3

*** NOTE: 2005-2006 and 2006-2007 data began new baseline, which utilized a revised formula to calculate data.**

¹ Texas Education Agency, PEIMS